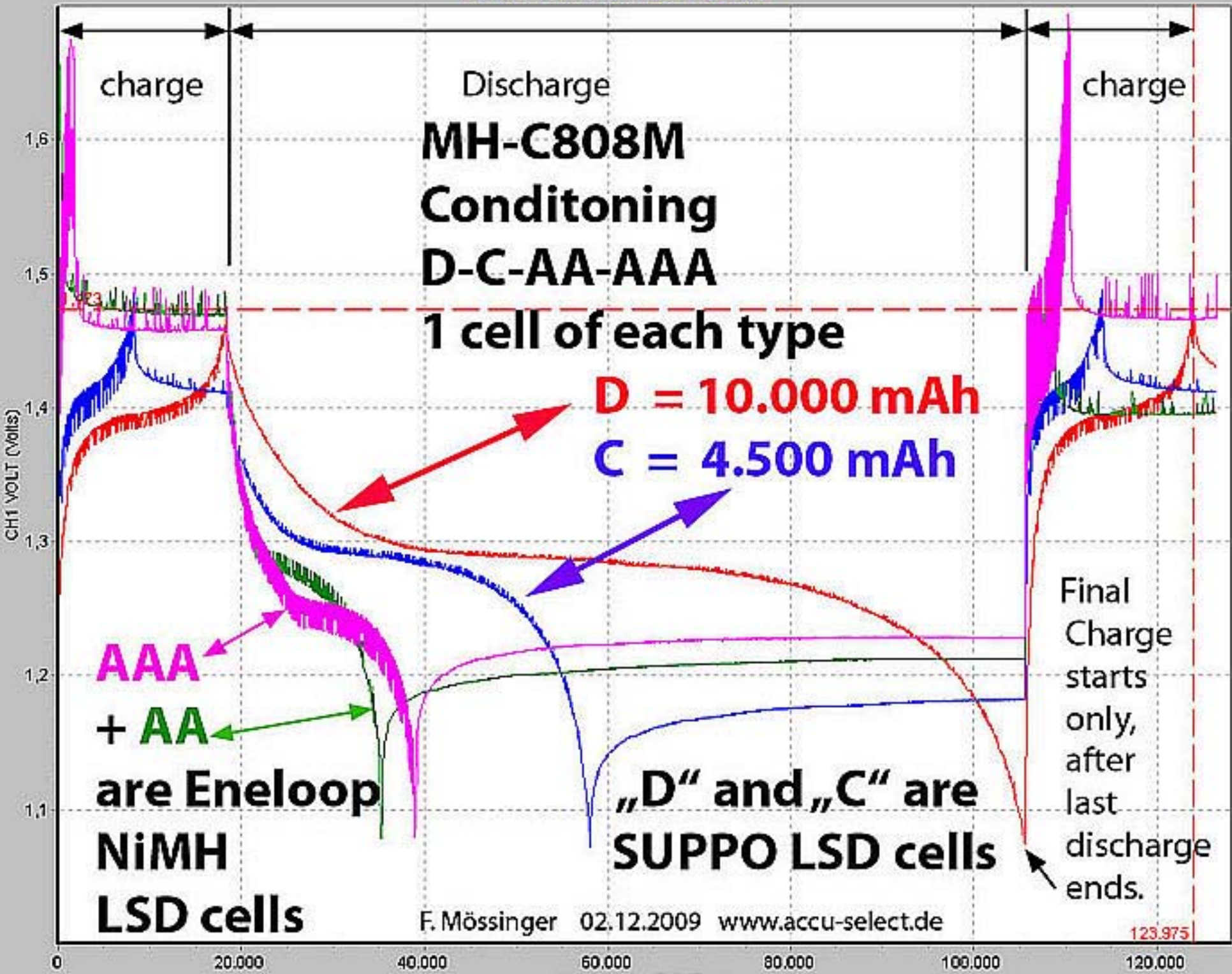
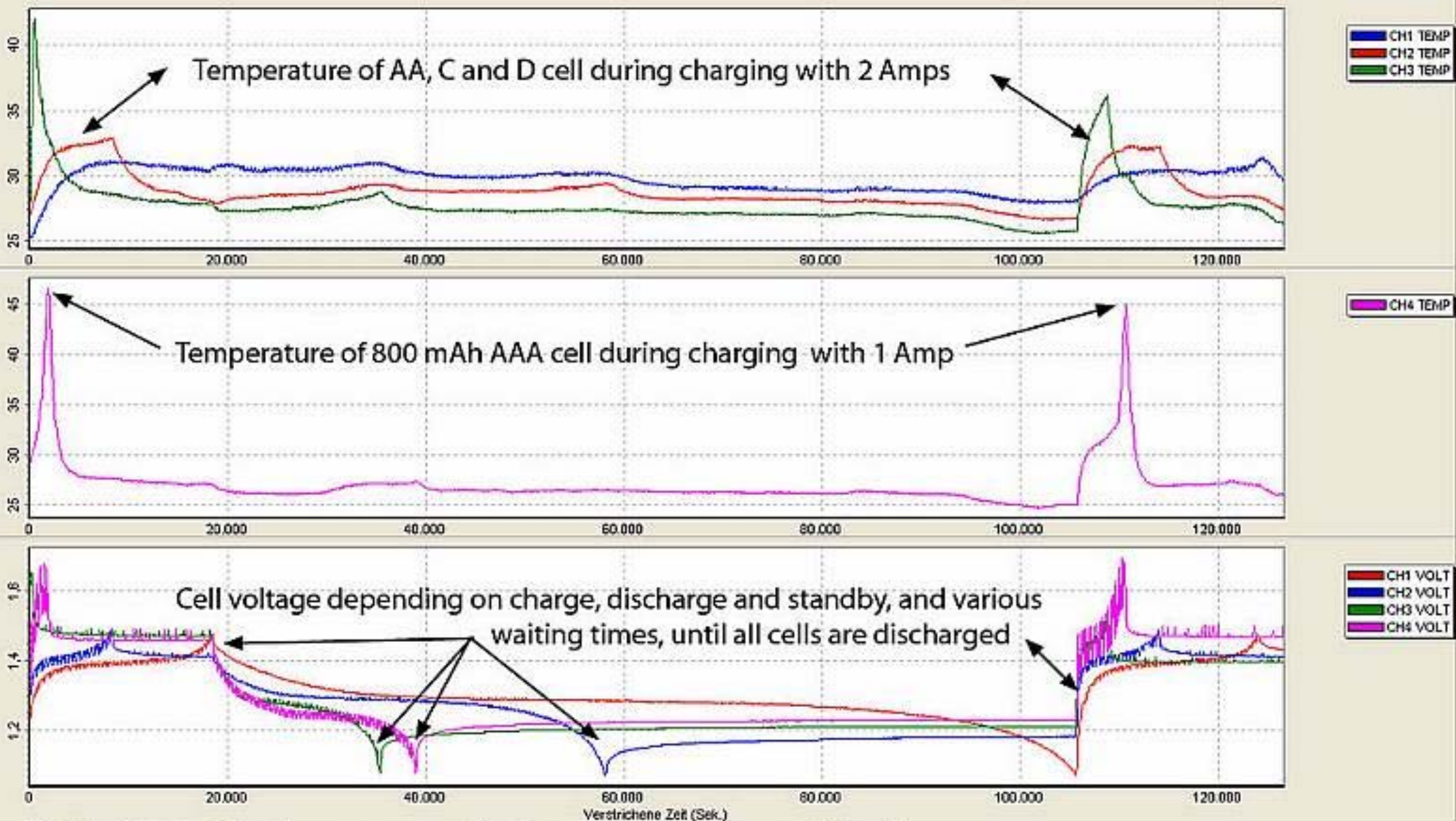


- CH1 TEMP
- CH2 TEMP
- CH3 TEMP
- CH4 TEMP
- CH1 VOLT
- CH2 VOLT
- CH3 VOLT
- CH4 VOLT



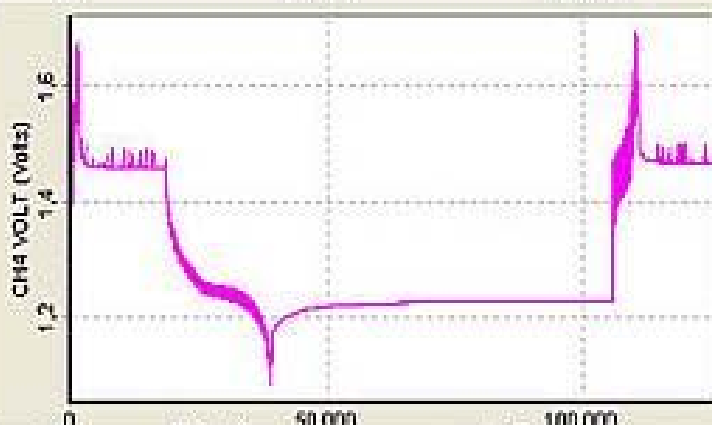
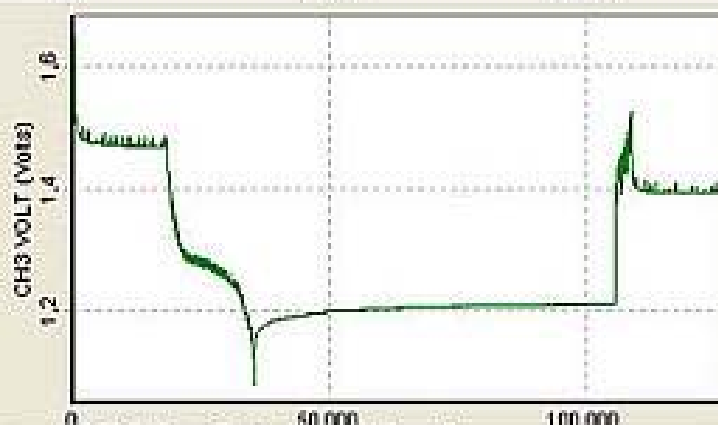
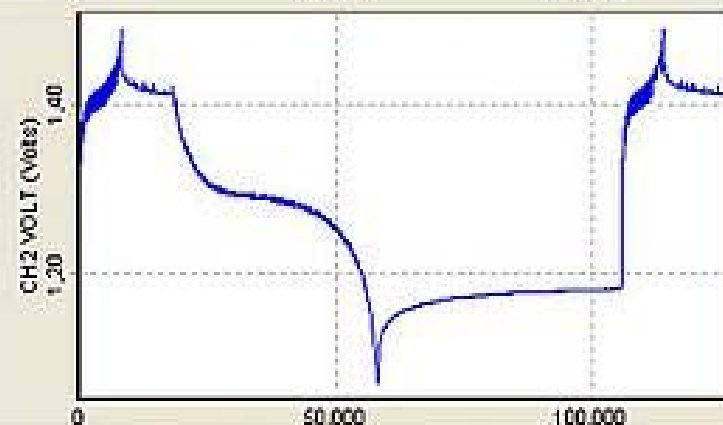
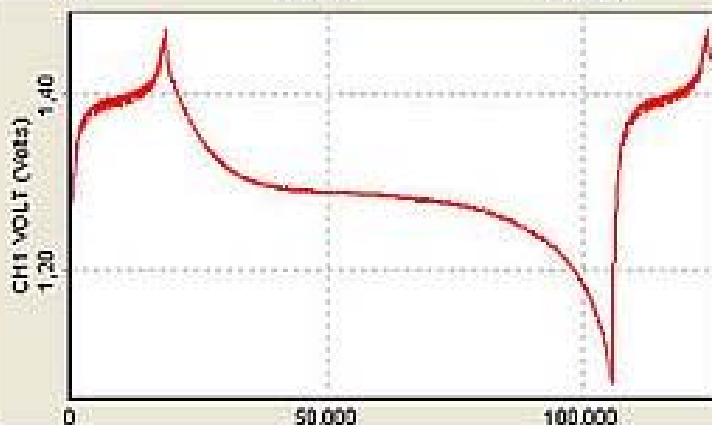
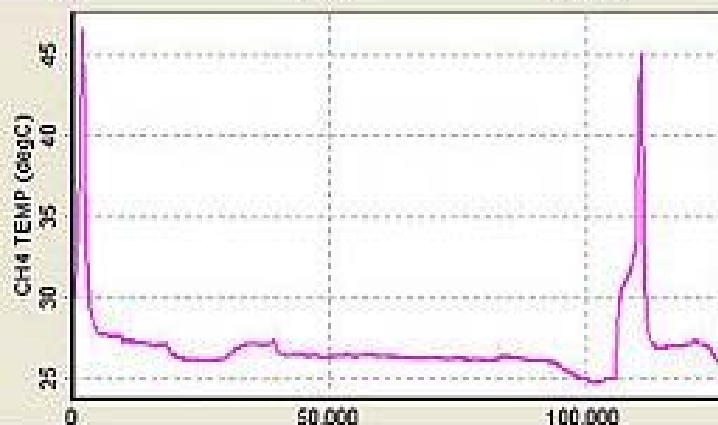
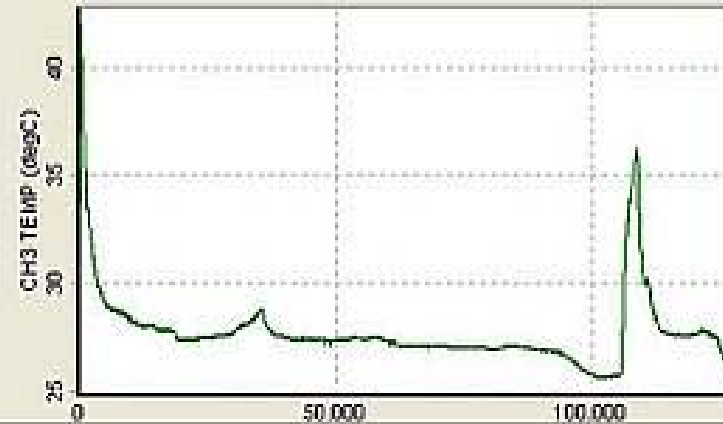


MH-C808M in normal Conditioning Mode

1 cell of each type „SUPPO D- and C, and ENELOOP AA and AAA

“D” = 10.000 mAh, “C” = 4.500 mAh, “AA” = 2000 mAh, “AAA” = 800 mAh

Charge starts only, after the last cell discharge has ended.



AA, C, D = 2 Amp.
 AAA = 1 Amp charging
 "AAA" + "AA"
 are Eneloop LSD,
 „D“ and „C“ are SUPPO
 NiMH LSD cells

MH-C808M in normal Conditioning Mode

SUPPO „D“ = 10.000 mAh, SUPPO „C“ = 4.500 mAh,

ENELOOP „AA“ = 2000 mAh, ENELOOP AAA = 800 mAh

Final Charge starts only, after the last cell discharge has ended.